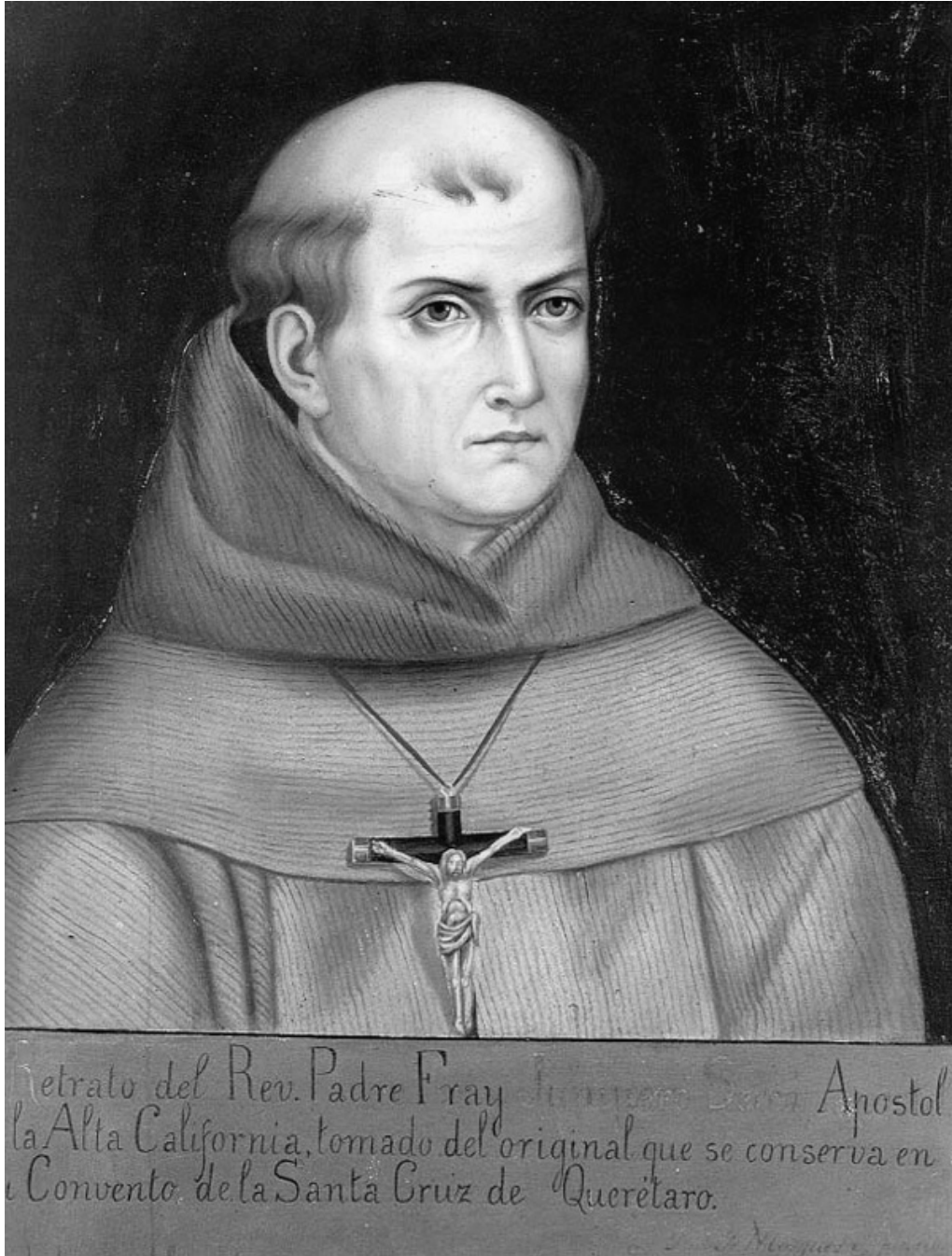


*Memorial of  
Blessed Junipero Serra,  
Apostle of California*



*Saint Mary's Basilica  
July 1, 2010*

## Opening Hymn

# SIEMPRE ADELANTE

18 D G A A7 D  
Siem - pre a - de - lan - te, al - ways for - ward, nev - er back.

22 D G A A7 D  
Siem - pre a - de - lan - te, al - ways for - ward, nev - er back.

Detailed description: This block contains two systems of musical notation for the hymn 'Siempre Adelante'. Each system consists of a vocal line (treble clef) and a piano accompaniment line (bass clef). The key signature is one sharp (F#) and the time signature is 4/4. The first system starts at measure 18 and the second at measure 22. Both systems feature a melody with a triplet of eighth notes in the vocal line and a bass line with a triplet of eighth notes. Chord symbols D, G, A, and A7 are placed above the vocal line. The lyrics are: 'Siem - pre a - de - lan - te, al - ways for - ward, nev - er back.'

## Penitential Rite

Ky - ri - e, \* e - le - i - son.

Chri - ste, e - le - i - son.

Ky - ri - e, e - le - i - son.

Ky - ri - e, \* \*\* e - le - i - son.

Detailed description: This block contains four staves of musical notation for the Penitential Rite. Each staff is in treble clef with a key signature of one sharp (F#). The music is a simple, flowing melody. The lyrics are: 'Ky - ri - e, \* e - le - i - son.', 'Chri - ste, e - le - i - son.', 'Ky - ri - e, e - le - i - son.', and 'Ky - ri - e, \* \*\* e - le - i - son.' The asterisks indicate specific liturgical markings.

## Responsorial Psalm: Psalm 16



**R.** You are my in - her - i - tance, O Lord.

Text © 1969, 1981, 1997, ICEL. All rights reserved. Used with permission. Music © 2001, John Schiavone.  
Published by OCP Publications. All rights reserved.

## Gospel Acclamation



*Cantor, then all:*  
Al - le - lu - ia, al - le - lu - ia, al - le - lu - ia.



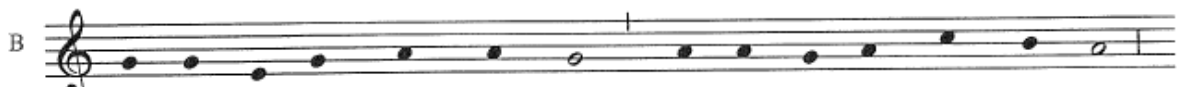
**YA VIENE EL ALBA**  
**(Morning Hymn of the California Missions)**

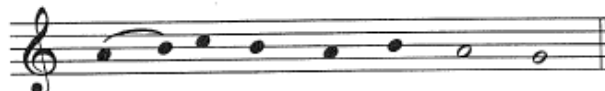
- 1. Ya viene el alba  
Rompiendo el día  
Digamos todos:  
“Ave María”.**
  
- 2. Nació María  
Para consuelo,  
De pecadores  
Y luz del cielo.**
  
- 3. Nació María  
Con eficacia;  
Ave María,  
Llena de gracia.**
  
- 4. Todos cantemos,  
En alta la voz:  
“Ave Maria,  
Madre de Gracia”.**



**Misión Santa Bárbara, California**

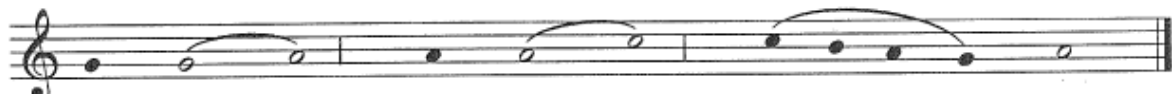
## Memorial Acclamation

B   
Dy - ing you de - stroyed our death, ris - ing you re - stored our life.



Lord — Je - sus, come in glo - ry.

## Amen



A - men. ——— A - men. ——— A - - - - - men.

## Lamb of God

Ascribed to Fray Narciso Duran, O.F.M. (1776-1846)



A ——— gnus De - i Qui ———

4  
tol - lis pec - ca ta mun ——— di 1,2:mi -  
3:do -

8  
se - re - re no ——— bis. ———  
na no - bis pa ——— cem.

**Misa de Cataluña (From the Old Mission Music of California)**

# Communion Procession

## PRAYER OF ST. FRANCIS

Sebastian Temple



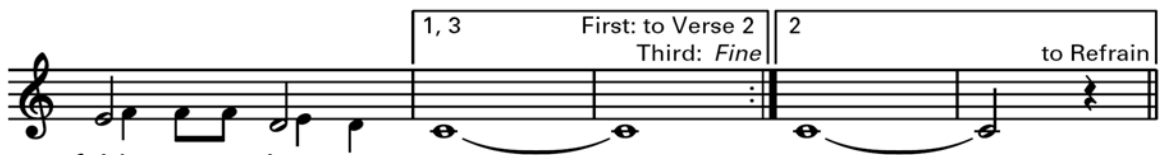
1. Make me a chan-nel of your peace.      Where there is ha-tred,  
2. Make me a chan-nel of your peace.      Where there's de-spair in  
3. Make me a chan-nel of your peace.      It is in par-don-



1. let me bring your love. \_\_\_\_\_      Where there is in - ju -  
2. life, let me bring hope. \_\_\_\_\_      Where there is dark-ness \_  
3. ing that we are par-doned, \_\_\_\_\_      In giv-ing of our-



1. ry, your par-don, Lord,      And where there's doubt, true  
2. \_\_\_\_\_ on - ly light,      And where there's sad - ness  
3. selves that we re - ceive,      And in dy - ing that we're



1. faith in you.      2. joy.  
2. ev - er  
3. born to e - ter-nal life.



O Mas-ter, grant that I may nev-er seek      So much to be con-



soled as to con-sole,      To be un-der-stood as to un-der-



stand,      To be loved, as to love, with all my soul.

Dedicated to Mrs. Francis Tracy. Text and music © 1967, OCP Publications. All rights reserved.

**Recessional:**      *Magnificat Quarti Toni (Johann Pachelbel, 1653-1706)*

*Always go forward,  
Never turn back!*

*Fray Junipero Serra*



*Siempre Adelante*